

“ARCTIC FLOATING UNIVERSITY - 2016” EXPEDITION PROJECT



«Exploring the Novaya Zemlya Mysteries»

EXPEDITION DATES: June 05-24, 2016

EXPEDITION DURATION: 20 days

DEADLINE FOR APPLICATION:

February 15, 2016

Application should be send to e-mail:
e.kalinova@narfu.ru

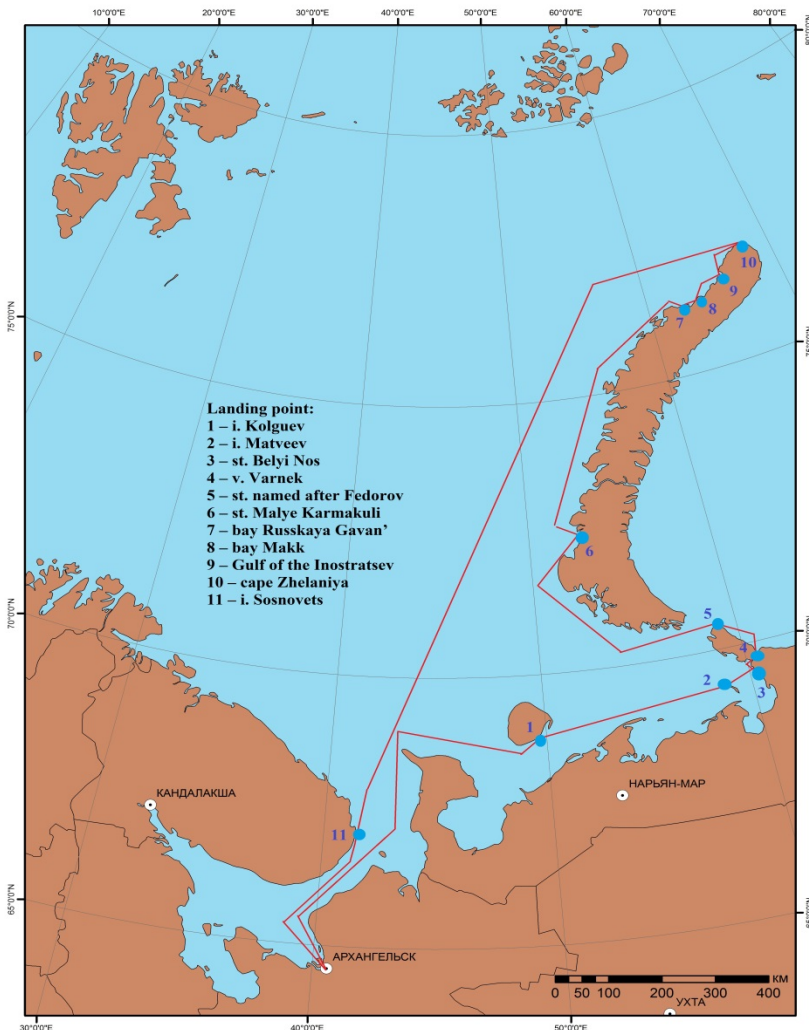
AIMS OF THE EXPEDITION:

- ❖ to carry out a complex interdisciplinary research of the Arctic environment
- ❖ to train young specialist for the of Arctic region

CONTACT PERSON:

Elena Kalinova,
Project Leader Assistant, NARFU
e.kalinova@narfu.ru; +79116841331

* Expedition Organizers: Northern (Arctic) Federal University, Roshydromet, Russian Geographical Society



* Expedition Route: Arkhangelsk - Kolguev Island - Matveev Island - Dolgy Island - Belyi Nos Meteostation - Varnek Settlement (Vaygach Island) - Meteostation named after Fedorov (Vaygach Island) - Malye Karmakuly Settlement (Novaya Zemlya) - Russkaya Gavan' Bay (Novaya Zemlya) - Mac Bay (Novaya Zemlya) - Inostrantsev Bay (Novaya Zemlya) - the Zhelaniya Cape (Novaya Zemlya) - Sosnovets Island - Arkhangelsk.

* Expedition participants: 56 people (students, post-graduate students, research fellows of both Russian and foreign scientific and academic institutions)

SEPARATE ROUTE SECTIONS CAN BE CHANGED DUE TO THE CLIMATE AND ENVIRONMENTAL CONDITIONS

* THE EXPEDITION PROGRAM

consists of the research and educational sections



RESEARCH PROGRAM:

- assessment of the conditions and degree of contamination of the local island territories of the former industrial activity zones in the areas of work for elimination of the accumulated environmental damage in Novaya Zemlya
- study of the species diversity and populations at Novaya Zemlya archipelago and adjacent waters in the context of climate change
- comprehensive monitoring of changes in the vegetation of the Arctic tundra transition zones in the context of climate change
- study of the historical and cultural heritage of the Russian Arctic national park in order to develop tourism and educational activities
- study of human body adaptation mechanisms to the conditions of high latitudes in the Arctic

EDUCATIONAL PROGRAM (5 ECTS):

- * 8 educational modules and 32 hours of the lecture course
- * Educational Modules:
 - Arctic climate
 - Study of Arctic biodiversity and Arctic seas and coastal areas bioresources
 - Cryogenic processes and modern changes of the Arctic Ocean ice sheet
 - Arctic seas and coastal areas ecology
 - History of the Arctic region
 - Arctic in the system of international relations
 - Arctic legal framework
 - Social and economical challenges of the Arctic territories development
- * Educational process is organized in form of seminars or field works according to the module plan.

* FACILITIES

The expedition is organized on the research-vessel “Professor Molchanov”. Originally built in 1982 for the Russian Hydro-Meteorological Service the R/V “Professor Molchanov” has been refurbished to accommodate a maximum of 80 passengers and staff.

- The vessel is a steel-hulled, ice-strengthened ship for the Arctic supply and oceanographic research, completely refurbished to meet both passenger and oceanographic needs. The R/V complies with international environmental and safety standards.



- The R/V “Professor Molchanov” has all the necessary facilities for organizing the educational process, laboratory and practical research. Public areas feature a large dining room, an observation lounge, a conference room with modern multimedia equipment, three laboratories, and a small infirmary with ship doctor.

* FINANCING

- An organization of the expeditions is carried out by means of co-financing by the organizations participating in the project
- A participation fee per person is 280 thousand rubles.

The fee covers: accommodation (the bed in the cabin, meal, and network connection), the transport expenditures and administrative costs during expedition