

FIRST ANNOUNCEMENT
“Arctic Floating University -2017”
Expedition Project
«ARCTICUM INCOGNITA»



Expedition Dates: **July 08-28, 2017**

Expedition Duration: 20 days

Expedition Organizers: Northern (Arctic) Federal University named after M.V. Lomonosov; Russian Hydrometeorological Agency (RosHydroMet)

Expedition Route: Arkhangelsk – the Zhelaniya Cape (Novaya Zemlya) – Hall Island (Franz Josef Land) – Heiss Island (Franz Josef Land) – Jackson Island (Franz Josef Land) – Rudolf Island (Franz Josef Land) – Hooker Island (Franz Josef Land) – Northbrook Island (Franz Josef Land) – Bell Island (Franz Josef Land) – Arkhangelsk.

Expedition participants:

58 people (undergraduates, post-graduates, research fellows of Russian and foreign scientific and academic institutions)

Partners participating in the expedition:

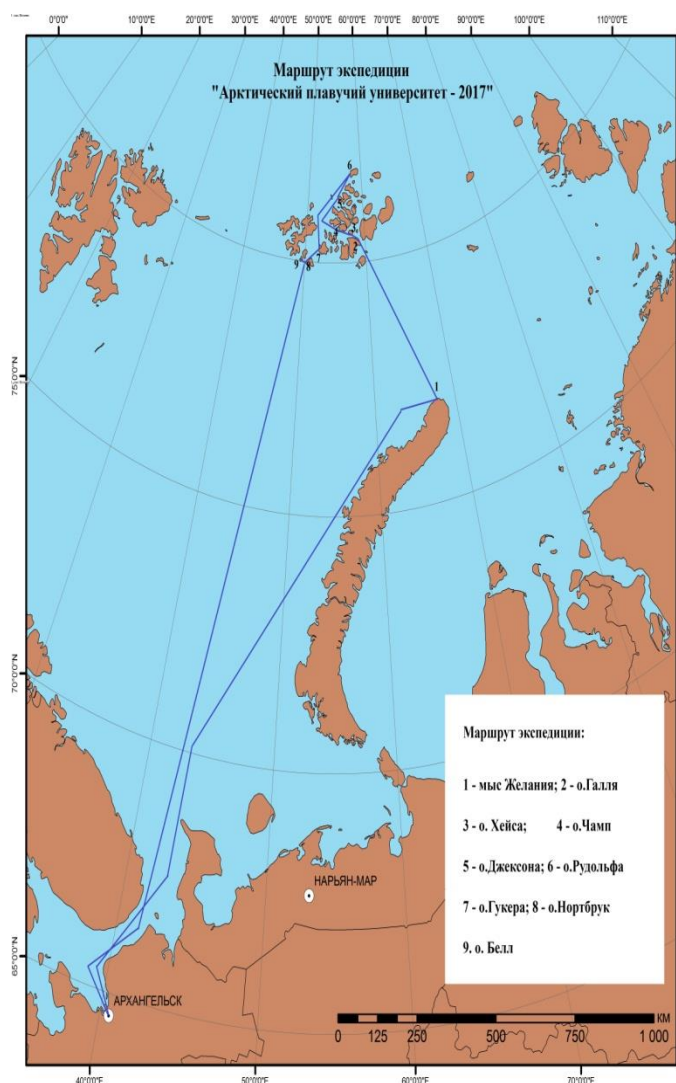
Russian Geographical Society, Russian Arctic National Park, Lomonosov Moscow State University, University of Geneva, University of Lausanne, Federal Polytechnic School of Lausanne.

Aims of the expedition:

- *acquiring new knowledge about the state and changes in the ecosystem of the coastal areas of Franz Josef Land archipelago;*
- *training young specialists of the Arctic-focused subjects: hydrometeorology, ecology, arctic biology, geography, ethnopolitology, international law etc.*

RESEARCH PROGRAM:

- ✓ assessment of state and degree of contamination within the local island territories of the former economic activities in the areas of work for the elimination of accumulated environmental damage;



- ✓ study of the species diversity of living organisms and populations in the archipelago of Franz Josef Land and adjacent waters in the context of climate change;
- ✓ study of historical and cultural heritage of the Russian Arctic National park for the purposes of development of tourism and educational activities;
- ✓ study of adaptive mechanisms of the human organism to the conditions of the High Arctic.

EDUCATIONAL PROGRAM:

The Program focuses on the bachelor, master and PhD students.

Contents of the program: 8 educational modules and 32 hours of the lecture course.

- ✓ gaining interdisciplinary knowledge about Arctic region through the demonstration of the natural complex and historical and cultural heritage of the Russian sector of the Arctic.

EDUCATIONAL MODULES:

- Arctic climate;
- Study of Arctic biodiversity and Arctic seas and coastal areas bioresources;
- Cryogenic processes and modern changes of the Arctic Ocean ice sheet;
- Arctic seas and coastal areas ecology;
- History of the Arctic region;
- Arctic in the system of international relations;
- Arctic legal framework;
- Social and economical challenges of the Arctic territories development;

Work on educational modules will be organized in form of seminars or field works according to the module plan. The participants will receive 5 ECTS for participation in the course and passing the exam.

As a result of research a collection of articles is planned to be released, as well as holding a conference for students and young scientists

FACILITIES

All expeditions are organized on the research-vessel “Professor Molchanov”. Originally built in 1982 for the Russian Hydro-Meteorological Service the R/V “Professor Molchanov” has been refurbished to accommodate a maximum of 80 passengers and staff.

The vessel is a steel-hulled, ice-strengthened ship for the Arctic supply and oceanographic research, completely refurbished to meet both passenger and oceanographic needs. The R/V complies with international environmental and safety standards.

The R/V “Professor Molchanov” has all the necessary facilities for organizing the educational process, laboratory and practical research. Public areas feature a large dining

room, an observation lounge, a conference room with modern multimedia equipment, three laboratories, and a small infirmary with ship doctor.

FINANCING

An organization of the expeditions is carried out by means of co-financing by the organizations participating in the project.

A participation fee per person is 280 000 RUB. The fee covers: accommodation (bed in the cabin) meal, network connection, in-land transportation, security permits, and administrative costs during expedition.

DEADLINE FOR APPLICATION

February 1, 2017

Application should be send to e-mail: Daryaa-Ant@yandex.ru

CONTACT PERSON:

Darya Antufyeva,

Project Leader Assistant, NARFU

Daryaa-Ant@yandex.ru; +79212458768