



# ***Change Habitats 2***

**Network for Habitat Monitoring by Airborne-supported Field work**  
– an innovative and effective process in implementation of the Habitat Directive



## **International Workshop**

on

**Advanced remote sensing methodology development to support  
Natura 2000 management actions across EU**

**7 December 2011, Budapest, Hungary**

**Comments to VITUKI presentation**

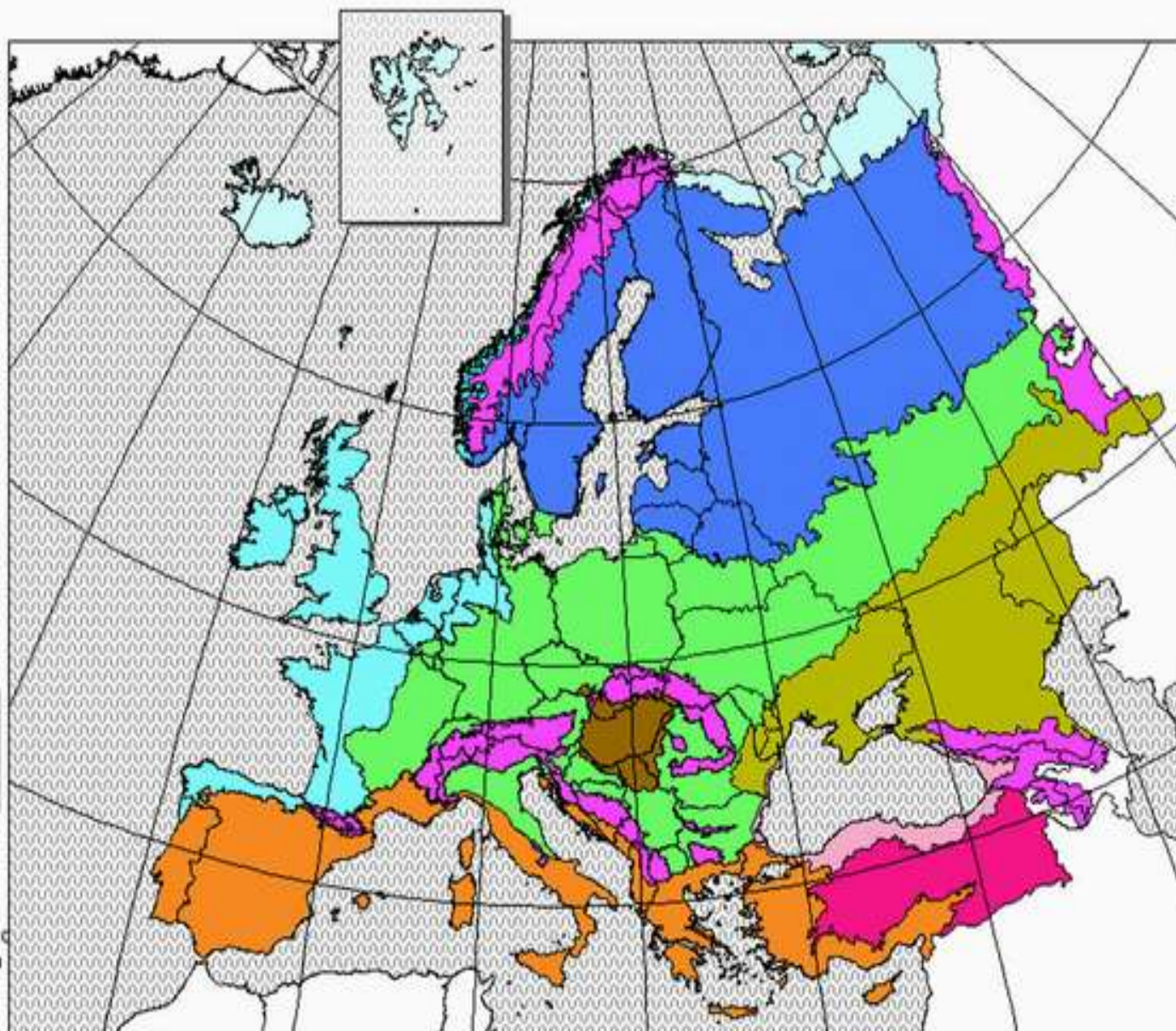
by

**Dr. János Fehér**

H. Associate Professor; Scientific Adviser  
Business Development Director

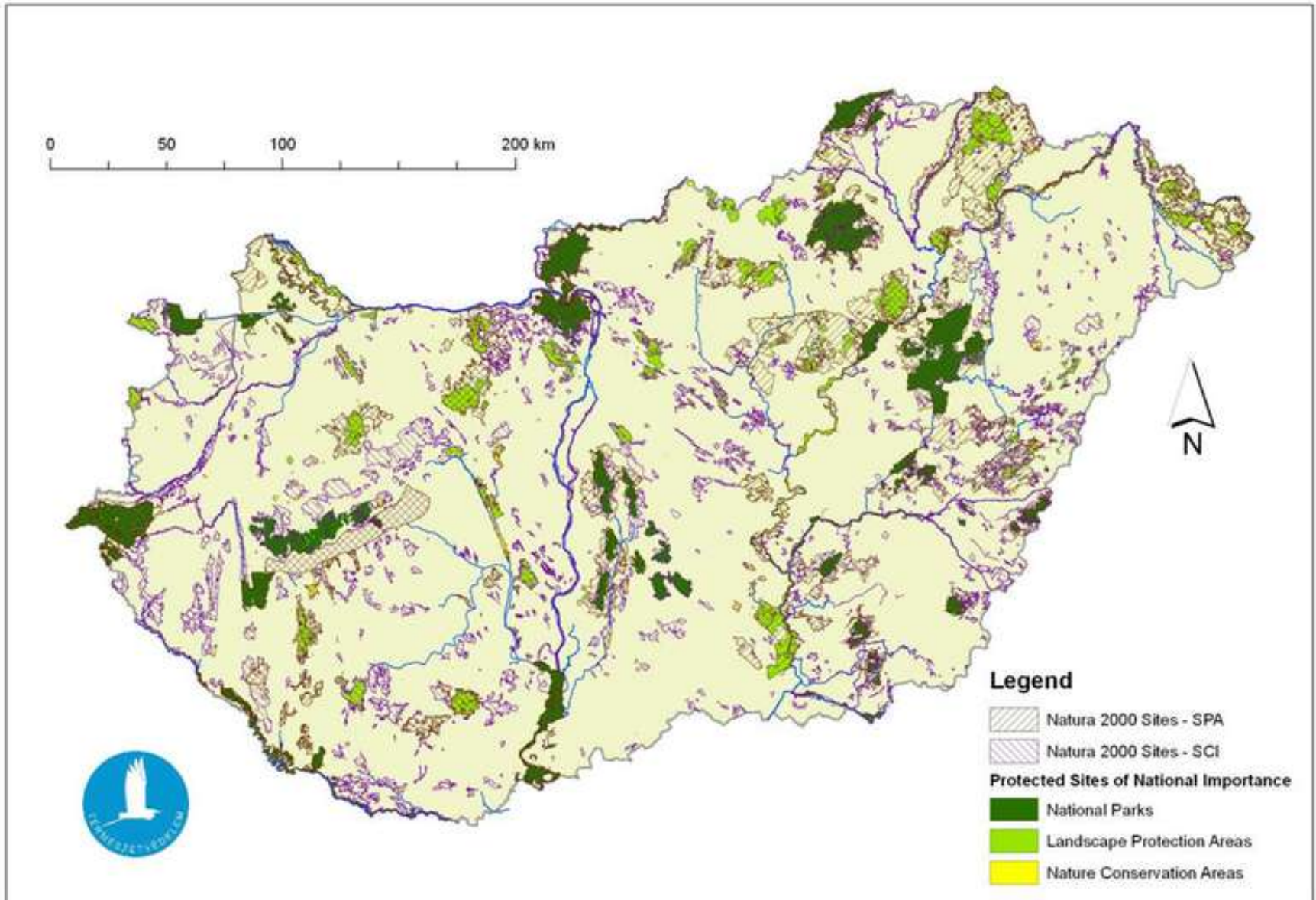
VITUKI Environmental and Water Management Research Institute, Budapest, Hungary

Emerald Network of Areas of Special Conservation Interest  
Extension of the Biogeographical Regions map of NATURA 2000 to Pan-Europe  
Revision as notified by the Standing Committee of the Bern Convention: November 2001



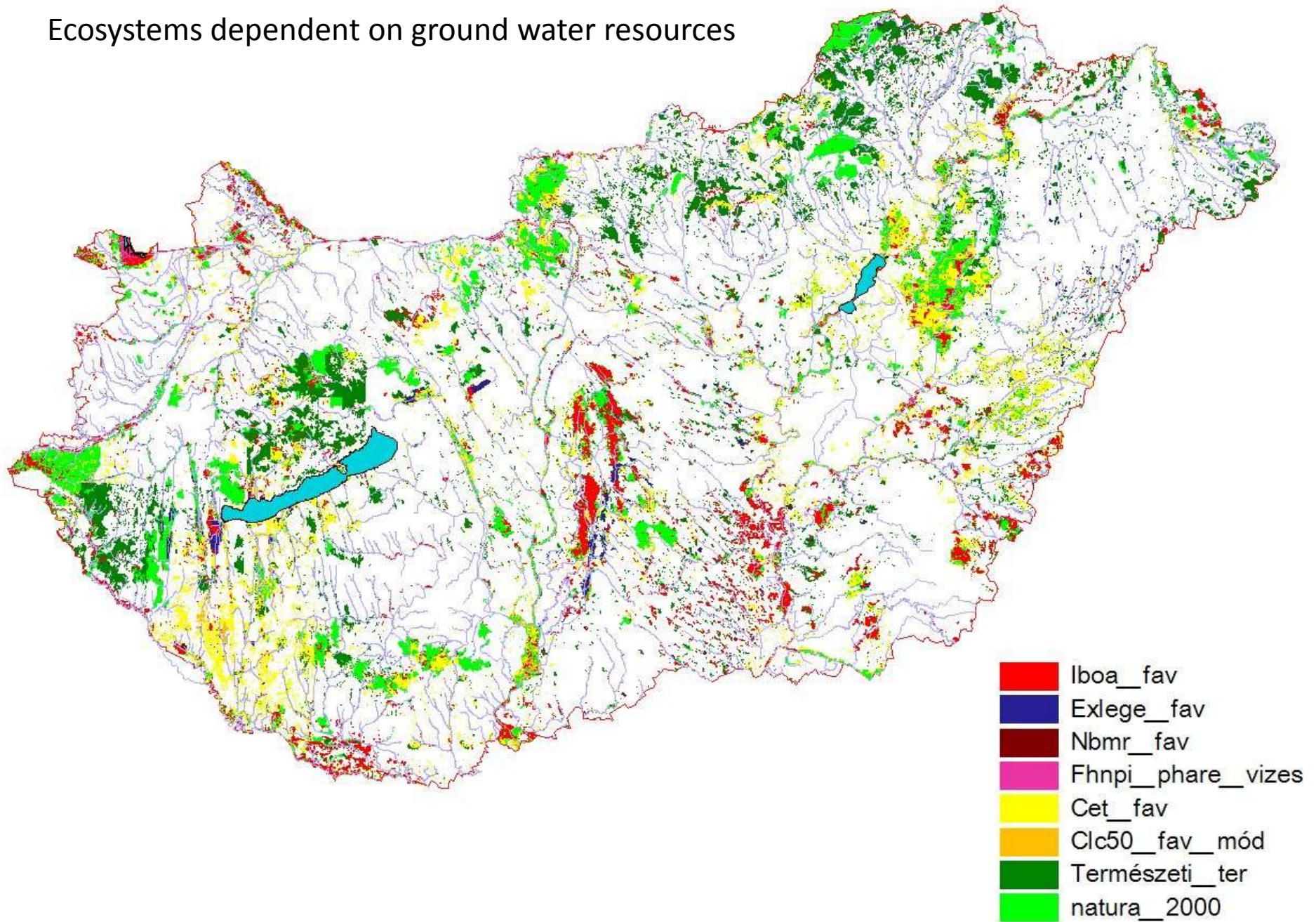
The Biogeographical map developed under Council Directive 92/43/CEE (NATURA 2000) formed the basis for this Pan-European extension. 5 Biogeographical regions were added (Arctic, Pannonian, Steppeic, Black Sea and Anatolian). (the EU-map is not changed)

# NATURA 2000 sites in Hungary



|                                    | <b>Number of concerned settlements</b> | <b>NATURA 2000 areas (ha)</b>        | <b>Average NATURA 2000 area (ha) / settlement</b> |
|------------------------------------|--|--------------------------------------|---|
| Natura SCI*                        | 2087                                   | 1 397 356.7                          | 669.5   |
| Natura SPA**                       | 1011                                   | 1 354 356.3                          | 1 339.6   |
| Total (overlaped)                  | 2206                                   | 1 968 236.1                          | 892.2   |
| Total (without overlap)            | 3098                                   | 2 751 713.1                          | 888.2   |
|                                    | <b>Concerned Settlements</b>           | <b>Average NATURA 2000 area (ha)</b> | <b>Average Settlement / 1 NATURA 2000 field</b>   |
| Natura SCI* 467 pieces             | 65.7                                   | 2 992.2                              | 4.4   |
| Natura SPA** 55 pieces             | 31.8                                   | 24 624.6                             | 18.3  |
| Total (overlaped) 512 pieces       | 69.5                                   | 3 844.2                              | 4.3   |
| Total (without overlap) 522 pieces | 97.6                                   | 5 271.4                              | 5.9   |

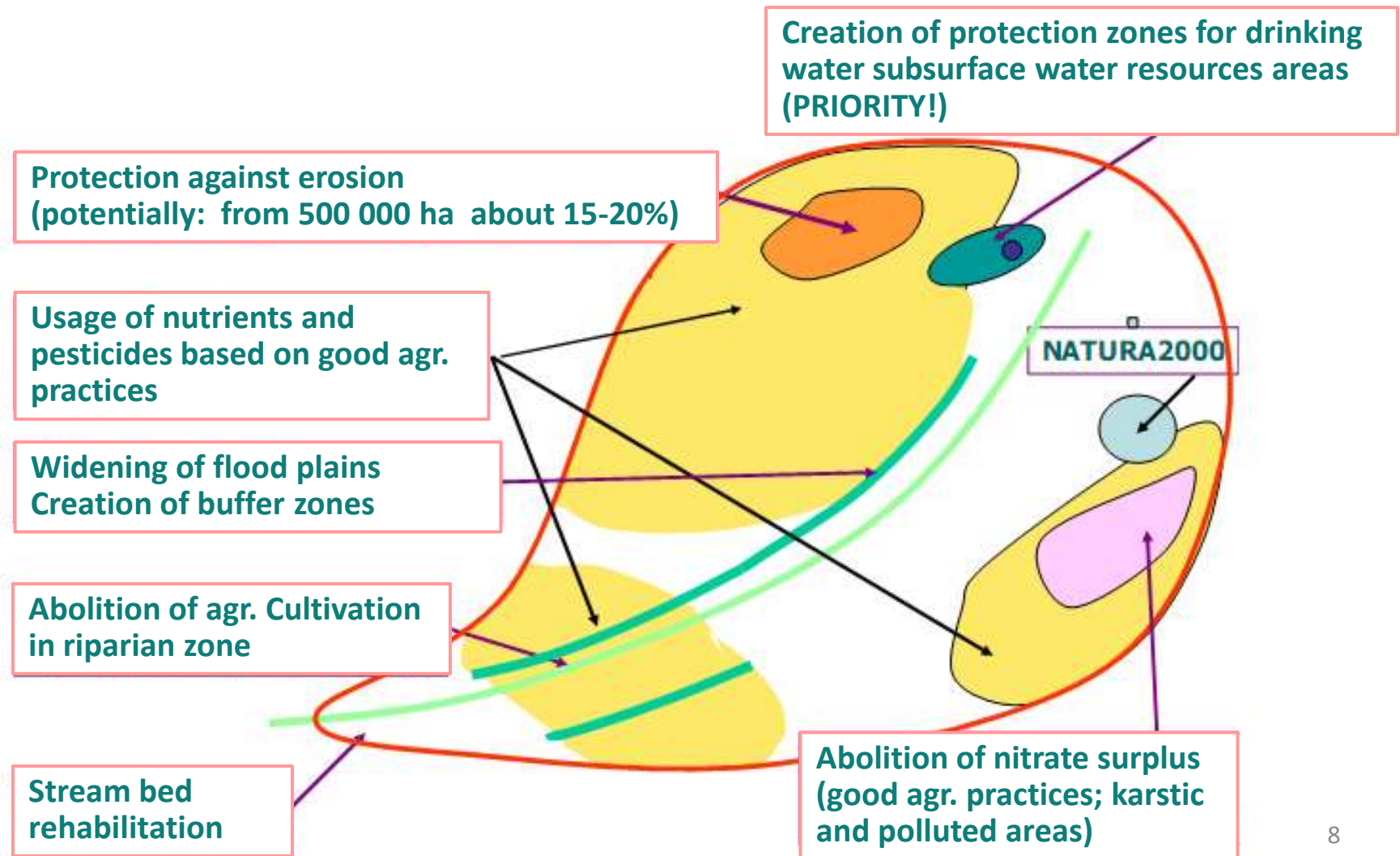
## Ecosystems dependent on ground water resources



|     |                                  | Unknown<br>(ha)  | Water quantity<br>(ha) | Water<br>quality (ha) | Water<br>qual and<br>quant (ha) | Summa<br>(ha)      | Total area<br>(ha) | Habitat<br>areas(%) |
|-----|----------------------------------|------------------|------------------------|-----------------------|---------------------------------|--------------------|--------------------|---------------------|
| 1.  | <b>Aggteleki NPI</b>             | 18 865,0         | 813,6                  | 0,0                   | 0,0                             | 19 678,6           | 211 090,3          | 9,3                 |
| 2.  | <b>Balaton-felvidéki<br/>NPI</b> | 12 999,4         | 71 710,9               | 6,7                   | 84 266,1                        | 168 983,0          | 1 004 663,9        | 16,8                |
| 3.  | <b>Bükk NPI</b>                  | 118 804,1        | 0,0                    | 0,0                   | 0,0                             | 118 804,1          | 1 117 659,4        | 10,6                |
| 4.  | <b>Duna-Dráva NPI</b>            | 179 078,1        | 153,7                  | 261,6                 | 30,5                            | 179 523,8          | 1 285 337,6        | 14,0                |
| 5.  | <b>Duna-Ipoly NPI</b>            | 121 474,7        | 2 378,9                | 0,0                   | 1 445,7                         | 125 299,3          | 1 354 931,3        | 9,2                 |
| 6.  | <b>Fertő-Hanság<br/>NPI</b>      | 10 730,5         | 19 259,7               | 963,6                 | 25 848,0                        | 56 801,8           | 409 081,6          | 13,9                |
| 7.  | <b>Hortobágyi NPI</b>            | 276 680,8        | 0,0                    | 3,4                   | 15,1                            | 276 699,3          | 1 778 100,2        | 15,6                |
| 8.  | <b>Kiskunsági NPI</b>            | 4 629,8          | 15 130,9               | 6 325,1               | 116 573,5                       | 142 659,2          | 801 964,4          | 17,8                |
| 9.  | <b>Körös-Maros NPI</b>           | 2 067,5          | 0,0                    | 846,7                 | 50 299,1                        | 53 213,3           | 1 005 303,9        | 5,3                 |
| 10. | <b>Őrségi NPI</b>                | 29 139,6         | 106,8                  | 7,1                   | 103,1                           | 29 356,7           | 344 274,4          | 8,5                 |
|     | <b>Country total</b>             | <i>774 469,5</i> | <i>109 554,6</i>       | <i>8 414,2</i>        | <i>278 581,0</i>                | <i>1 171 019,2</i> | <i>9 312 407,0</i> | <i>12,6</i>         |

|                                    | <b>River Water Bodies</b> | <b>Lake Water Bodies</b> | <b>Ground water Bodies</b> |
|------------------------------------|---------------------------|--------------------------|----------------------------|
| Delineated                         | 869                       | 213                      | 185                        |
| In connection with protected areas | 683                       | 127                      | 91                         |
|                                    | 78%                       | 59%                      | 49%                        |

# Elements of agriculture related measures in river basin management plans





**Thank you for your attention**

feher.janos@vituki.hu

or

feher.medve@t-online.hu